

puentes, túneles y viaductos : são paulo : bridges, tunnels and viaducts

puentes, túneles y viaductos : são paulo : bridges, tunnels and viaducts

edición : carla zaccagnini : edition

dibujos : nicolás robbio : drawings

fotografías : seção arquivo de negativos | pmsp | smc | dph | dim : photographs

diseño : raul loureiro : design

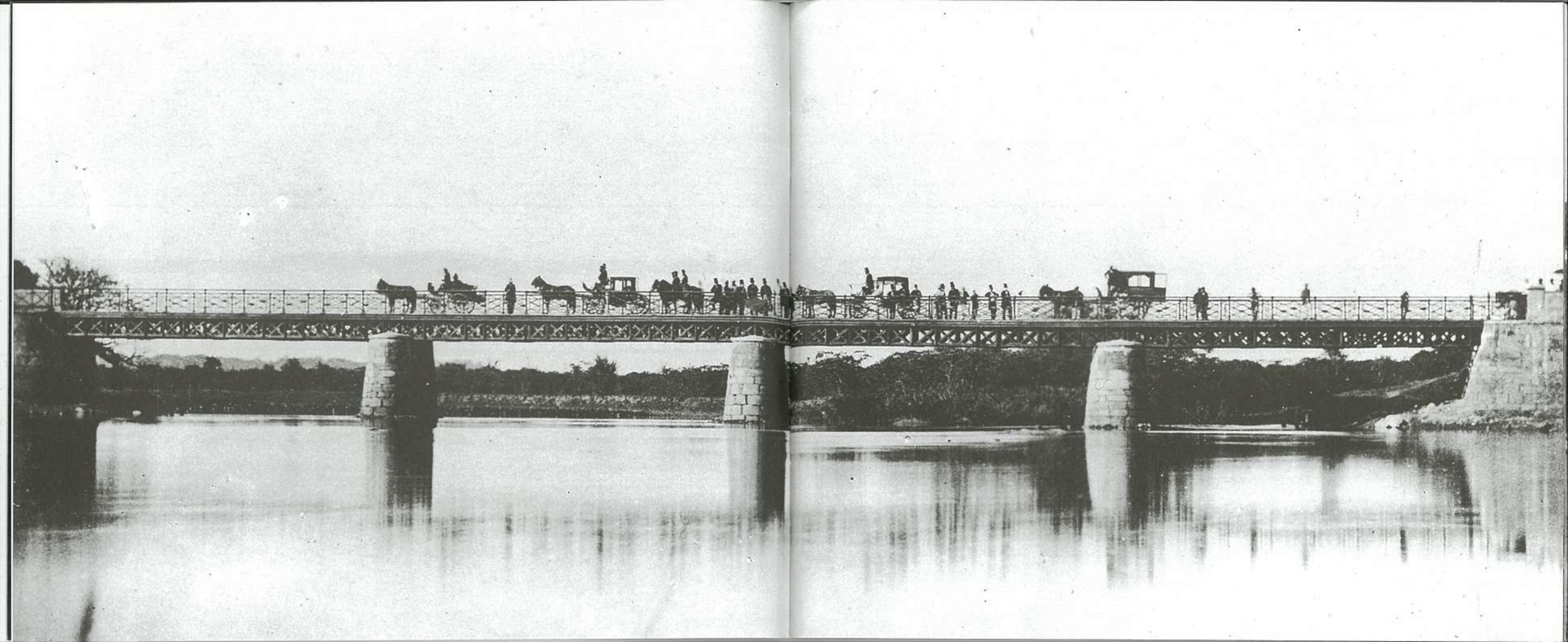
"Porque el hombre es el ser que liga, que siempre debe separar y que sin separar no puede ligar, por esto, debemos concebir la existencia meramente indiferente de ambas orillas, ante todo espiritualmente, como una separación, para ligarlas por medio de un puente. Y del mismo modo, el hombre es el ser fronterizo que no tiene ninguna frontera."

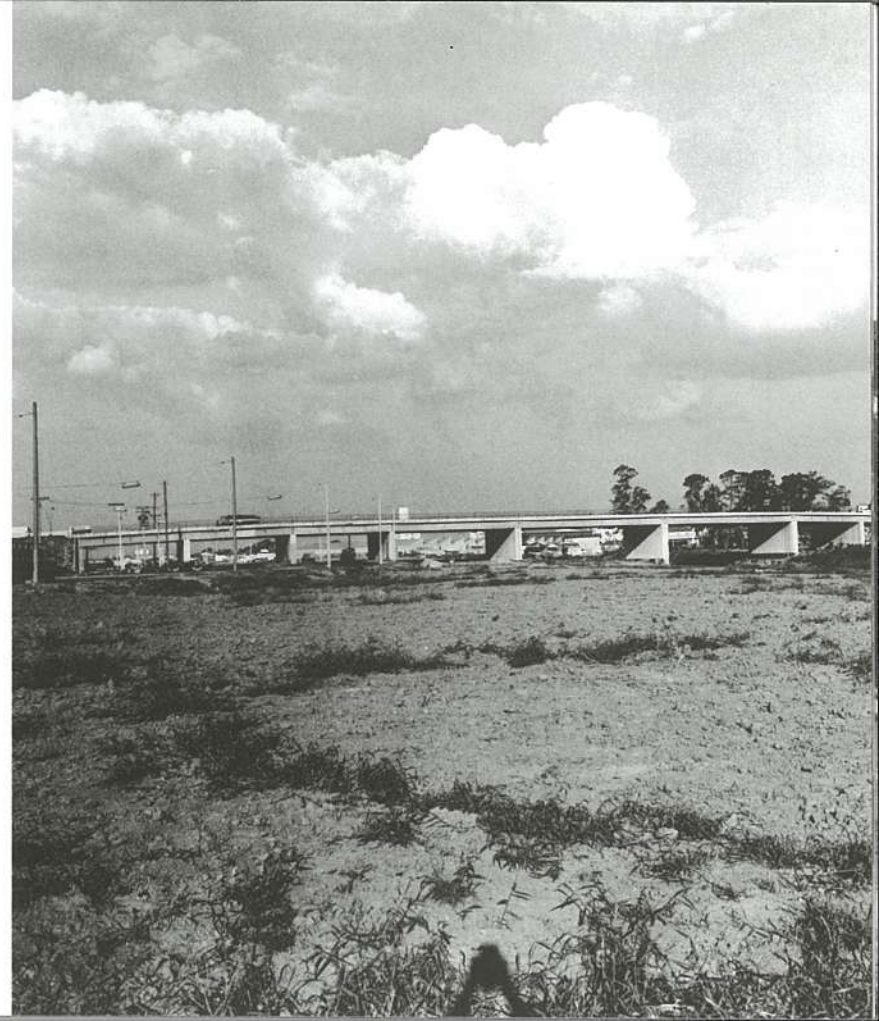
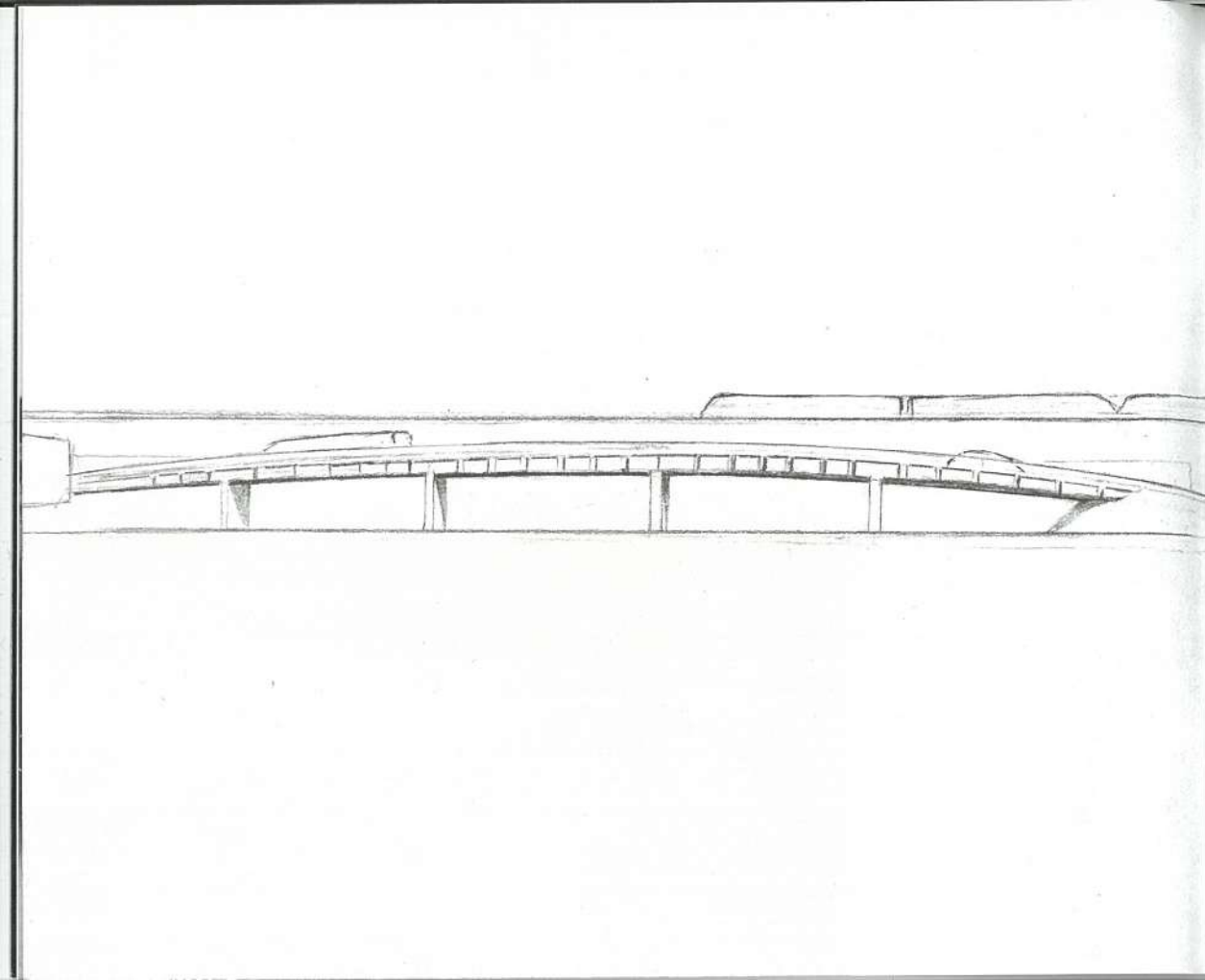
Georg Simmel. "Puente y puerta" in *El Individuo y la libertad – ensayos de crítica de la cultura*. Barcelona: Ediciones Península, 1986

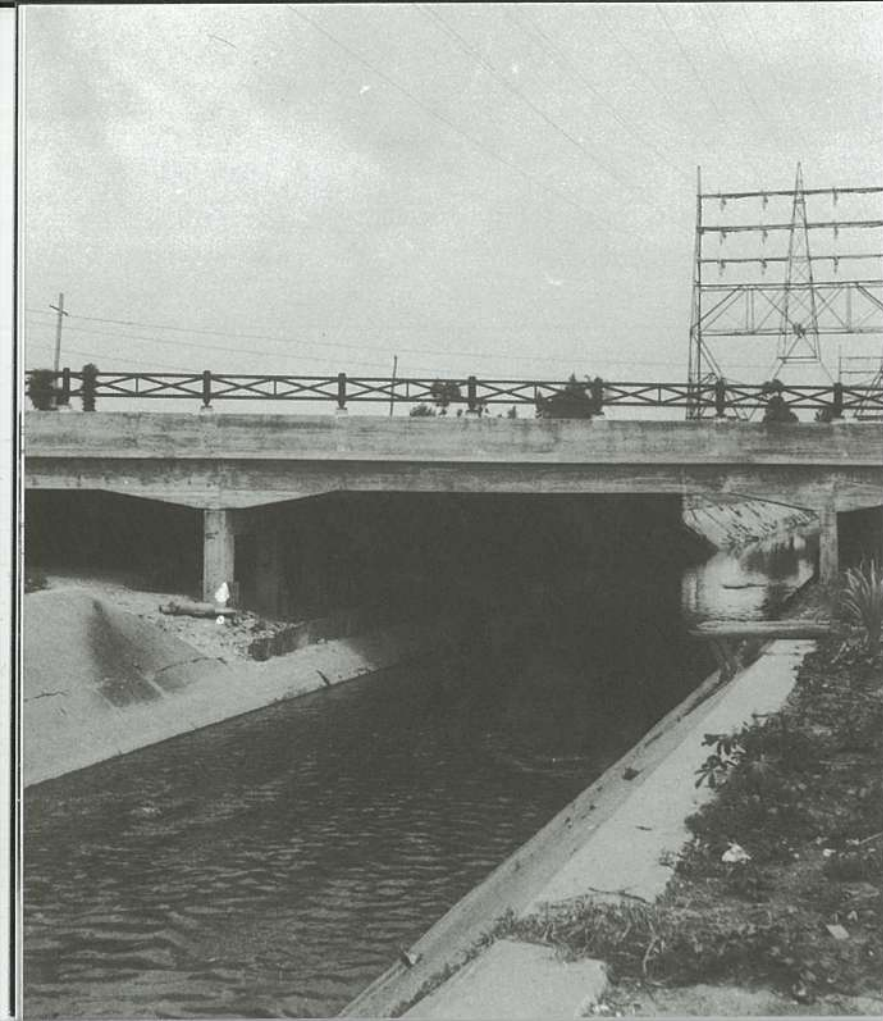
"Because the human being is the connecting creature who must always separate and cannot connect without separating – that is why we must first conceive intellectually of the merely indifferent existence of two river banks as something separated in order to connect them by means of a bridge. And the human being is likewise the bordering creature who has no border."

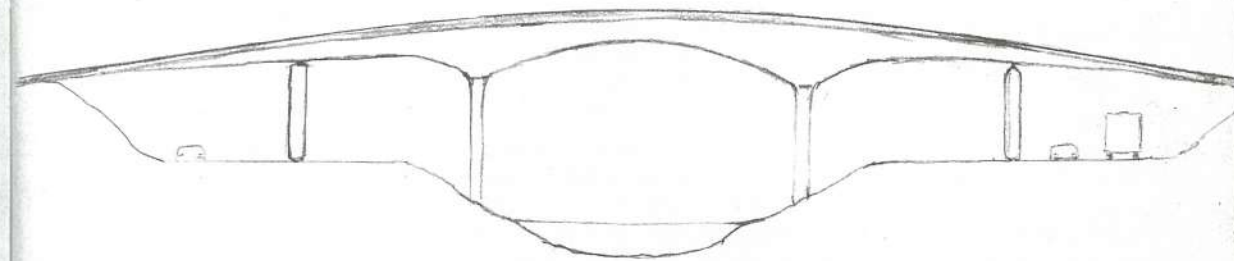
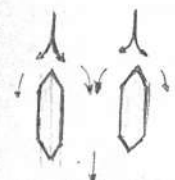
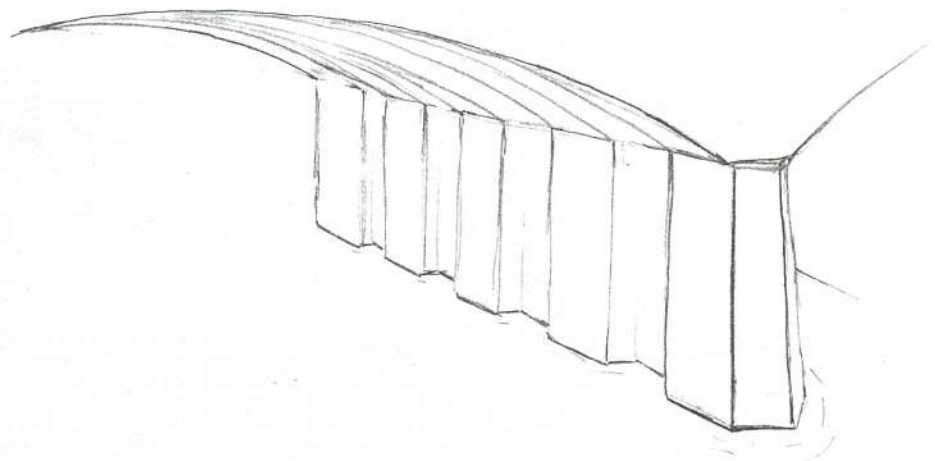
Georg Simmel. "Bridge and door" in *Theory, Culture & Society*. Volume 11, issue 1. London: Sage Publications, February 1994



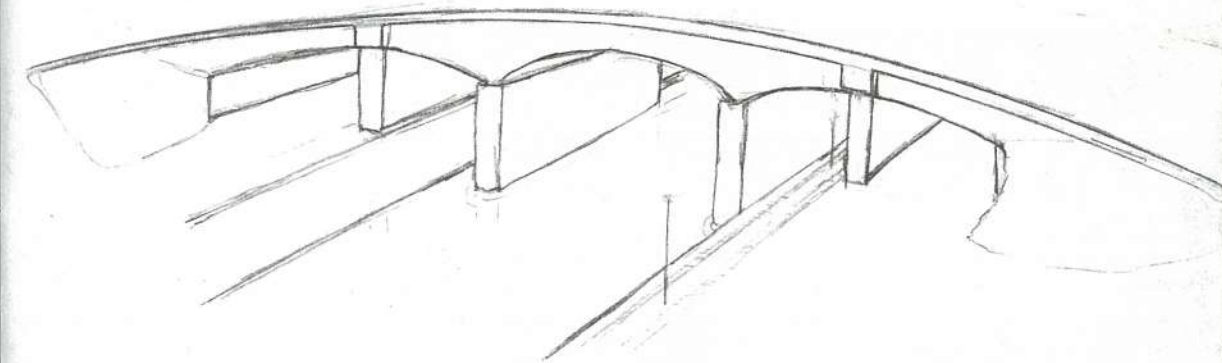


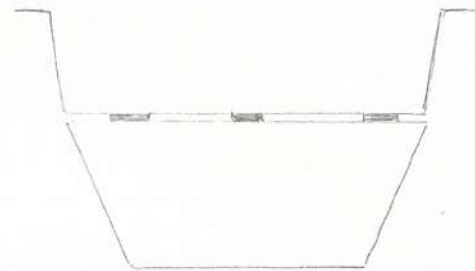
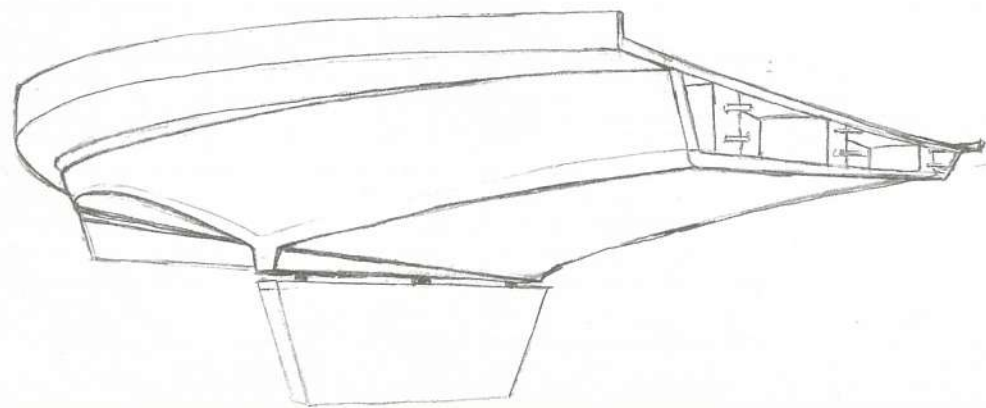


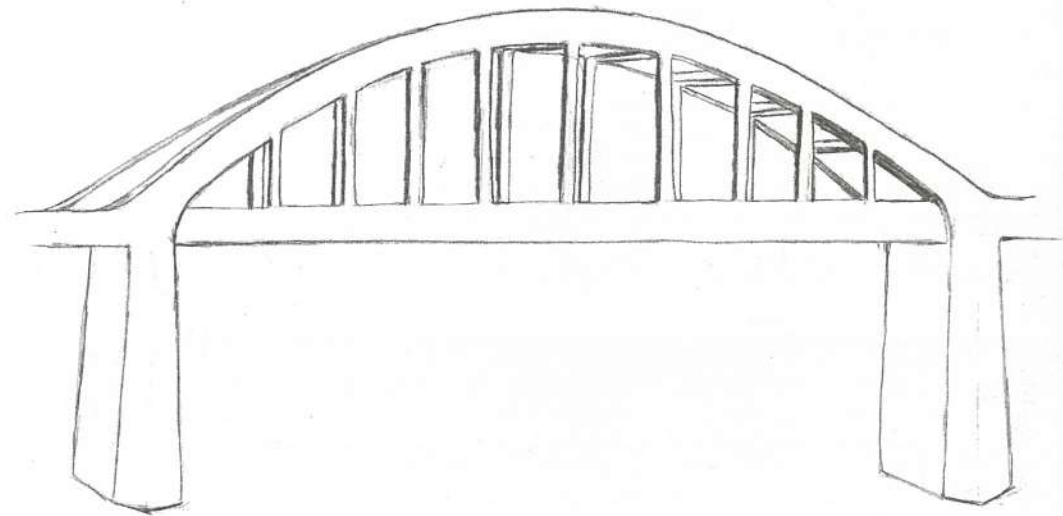
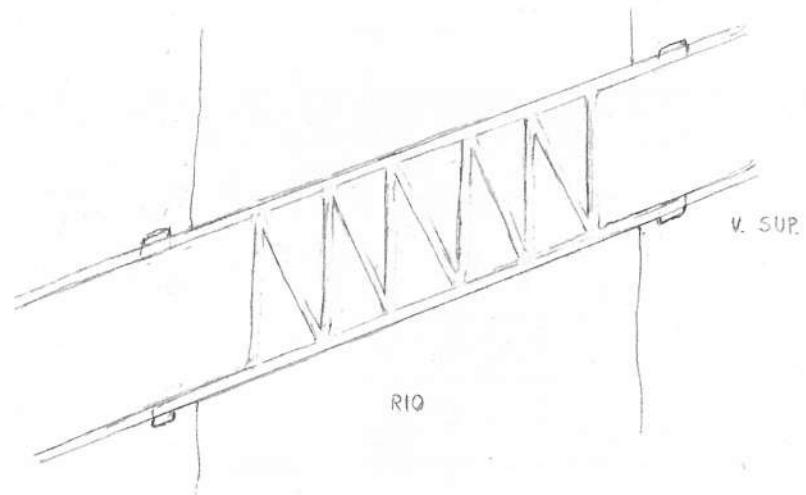
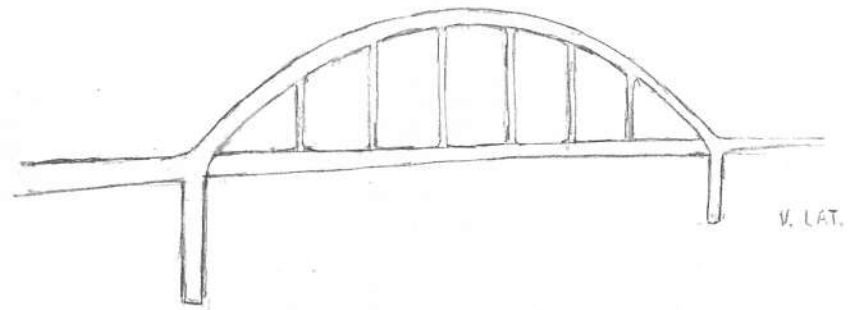




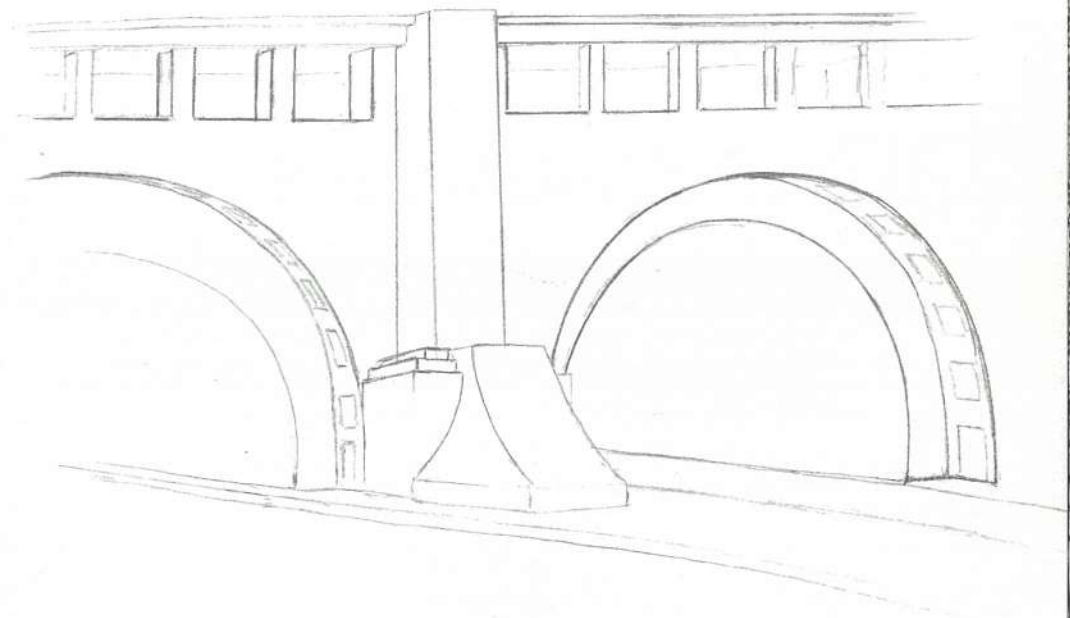
REBOUDAS

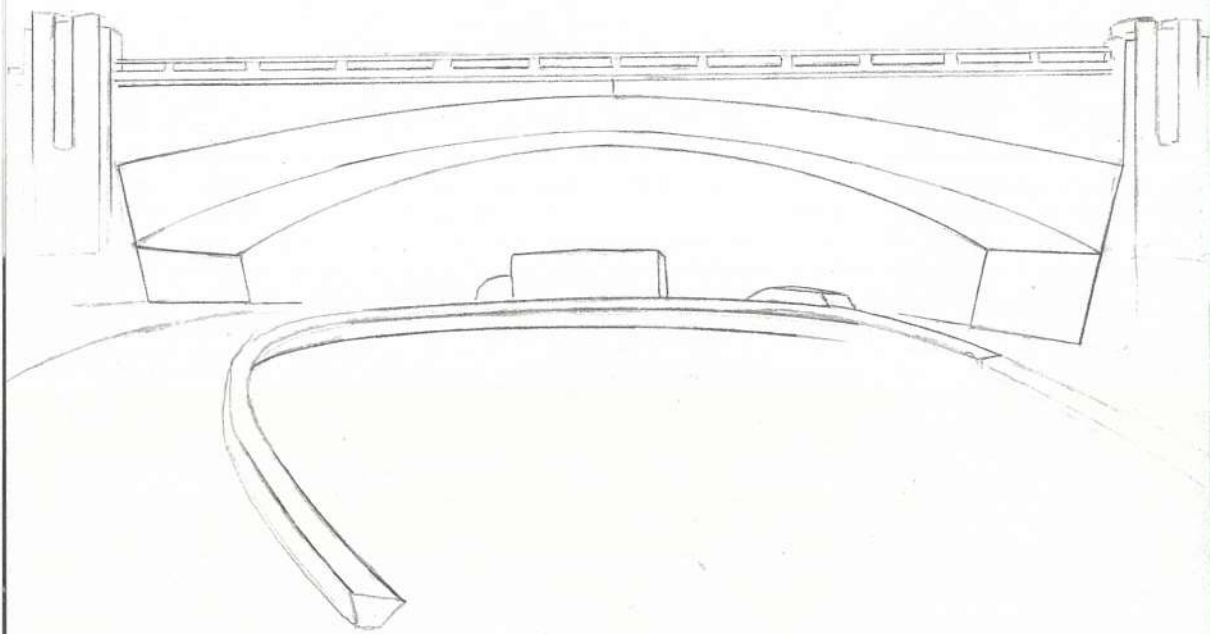


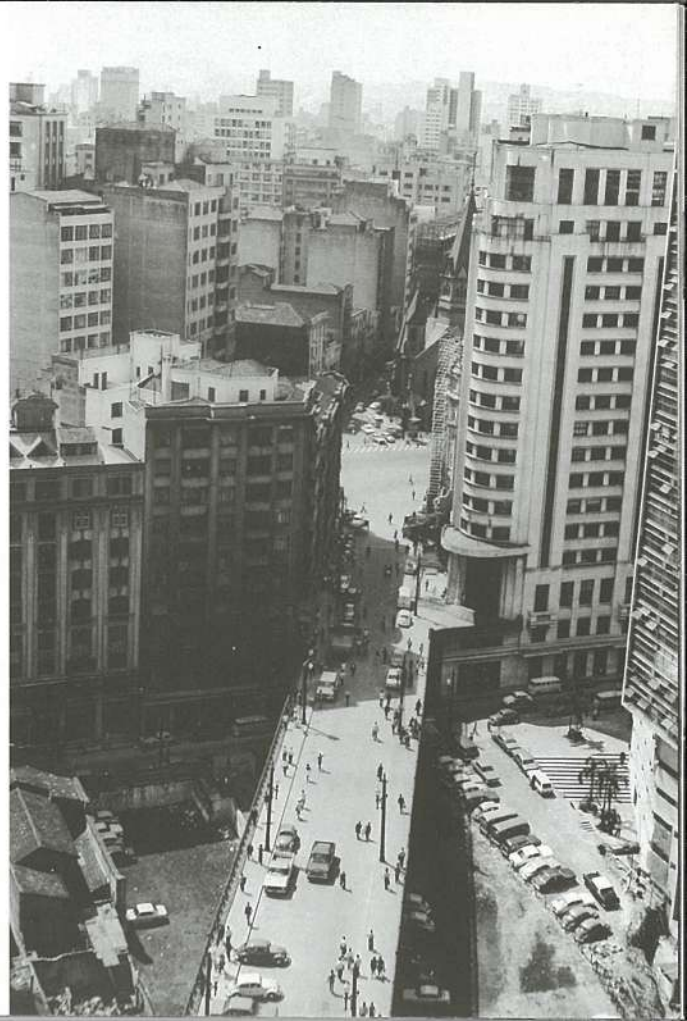


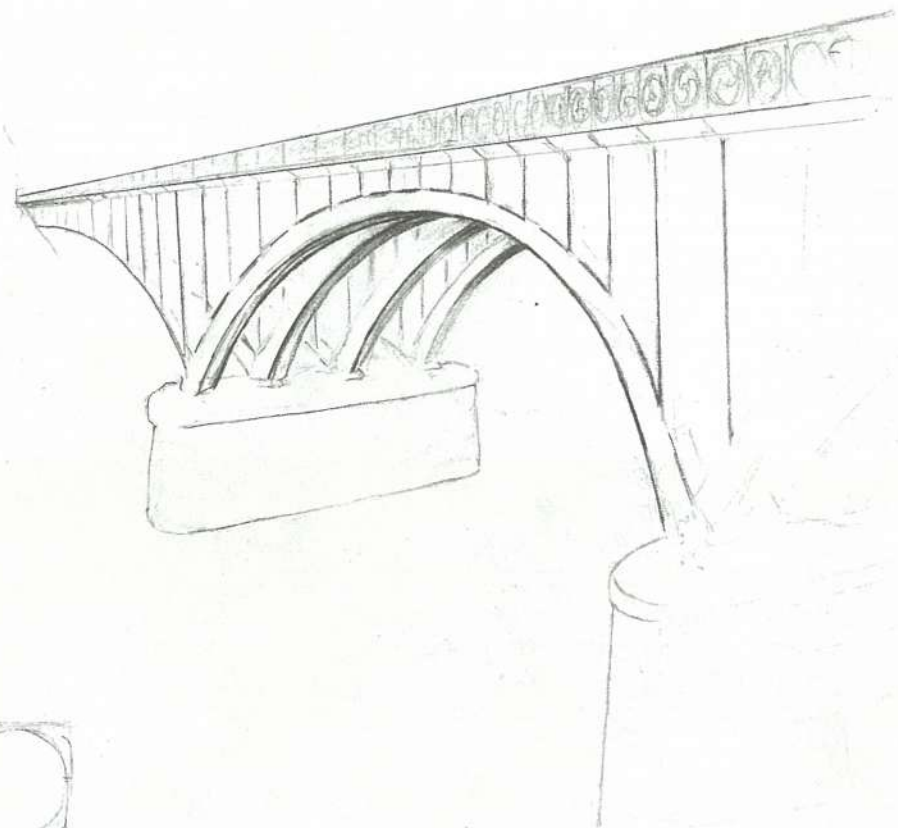


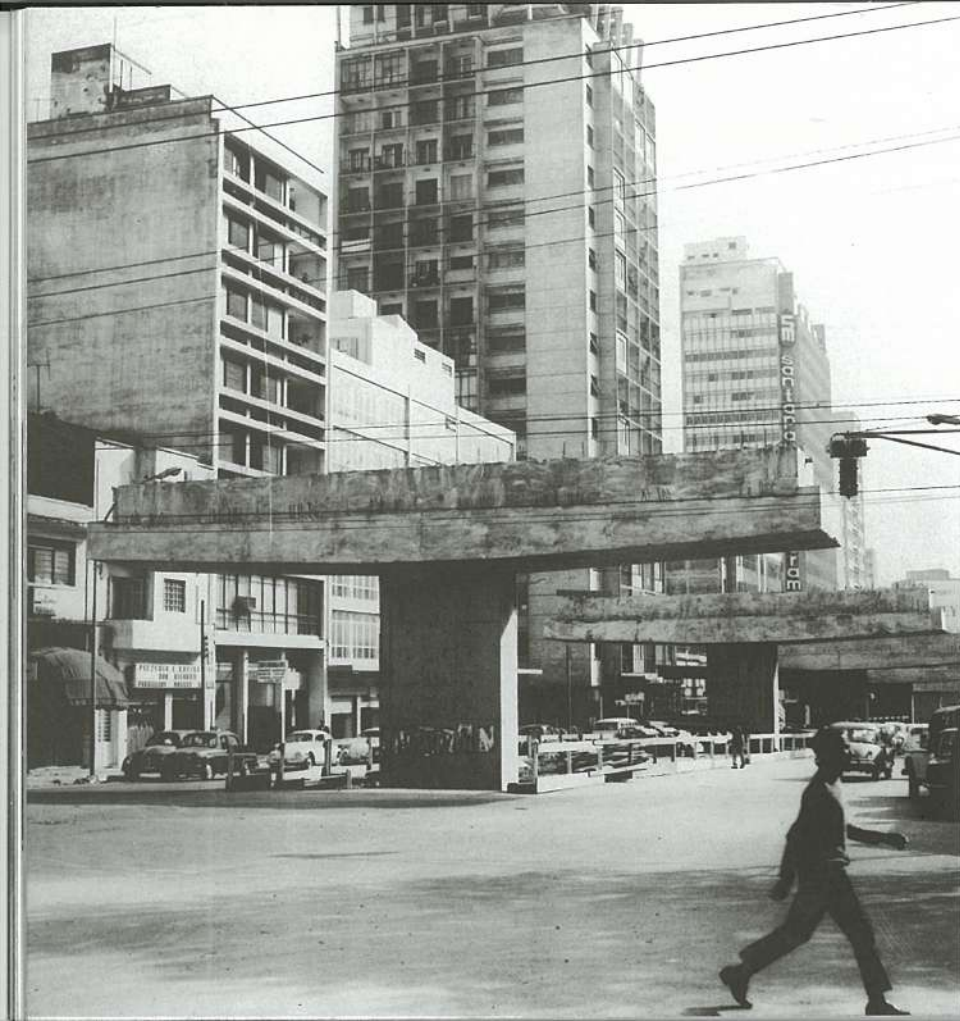


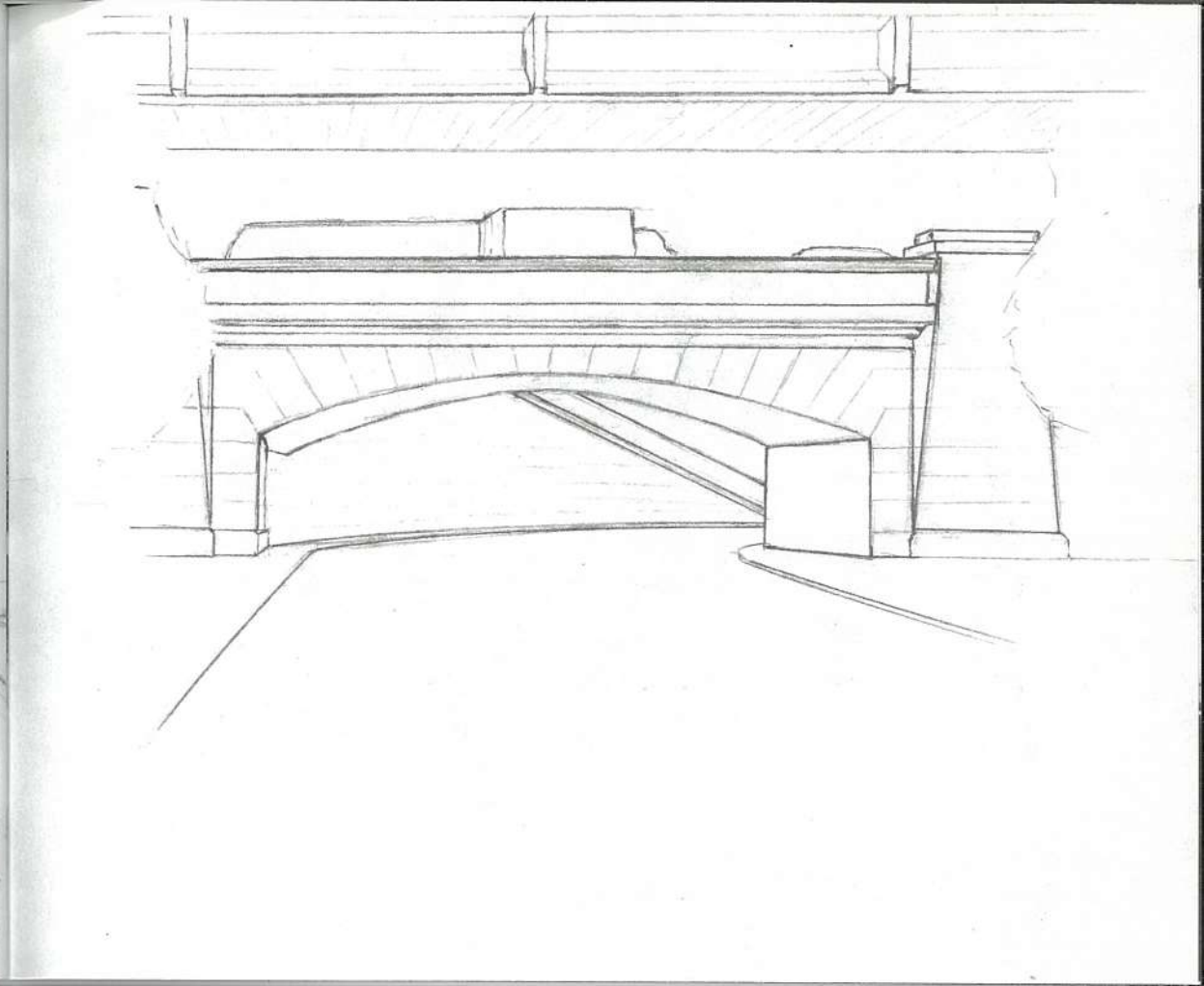
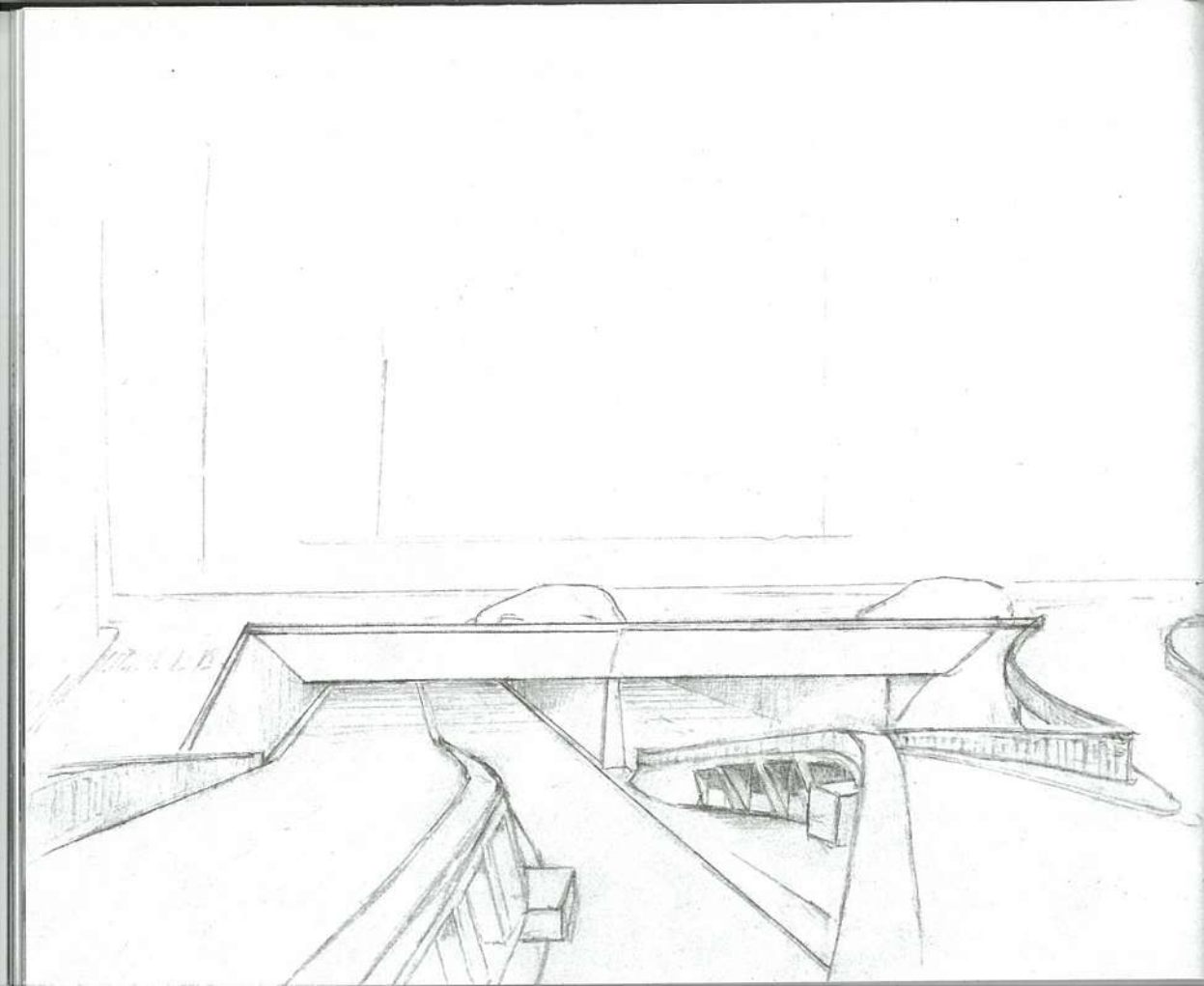


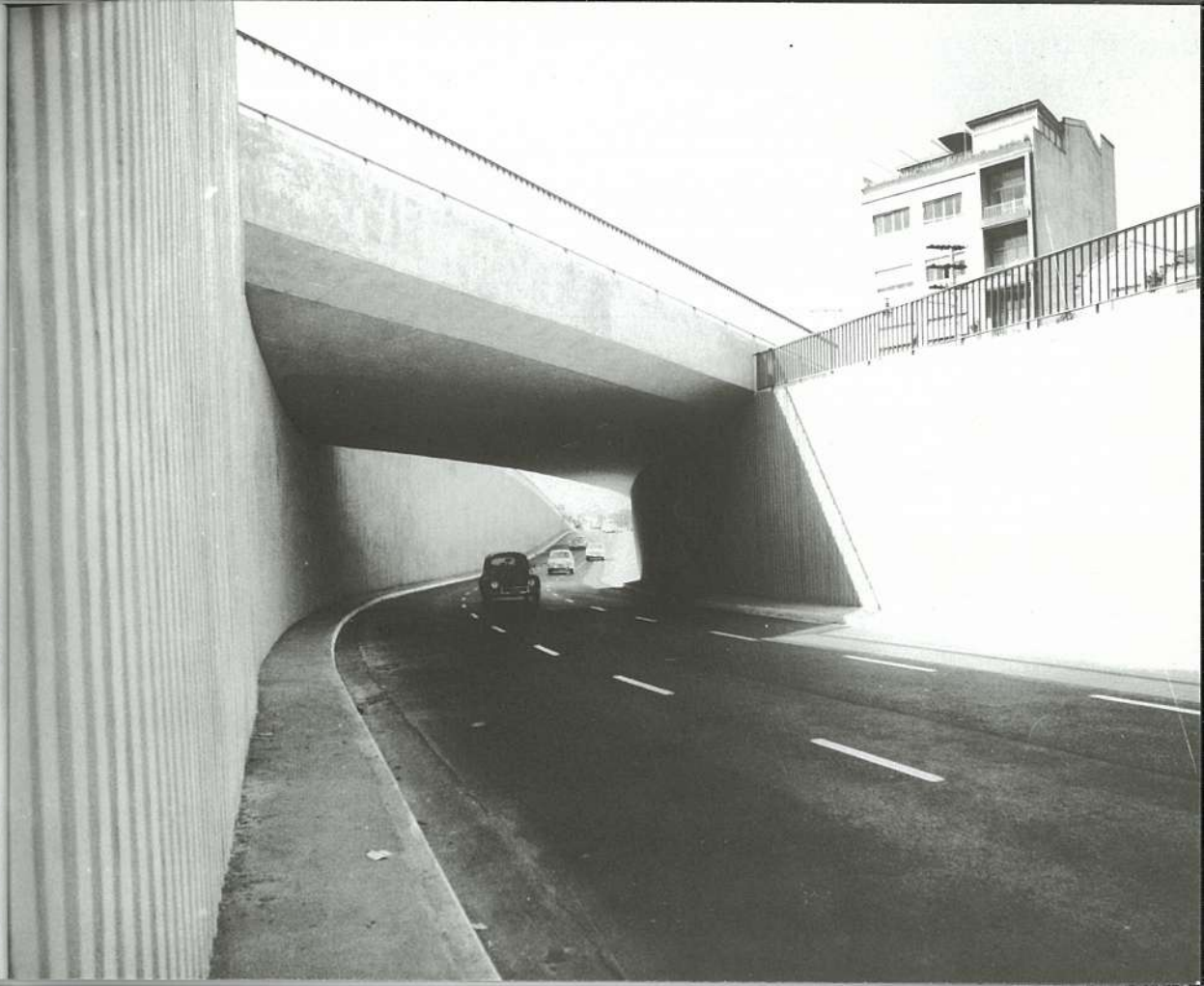
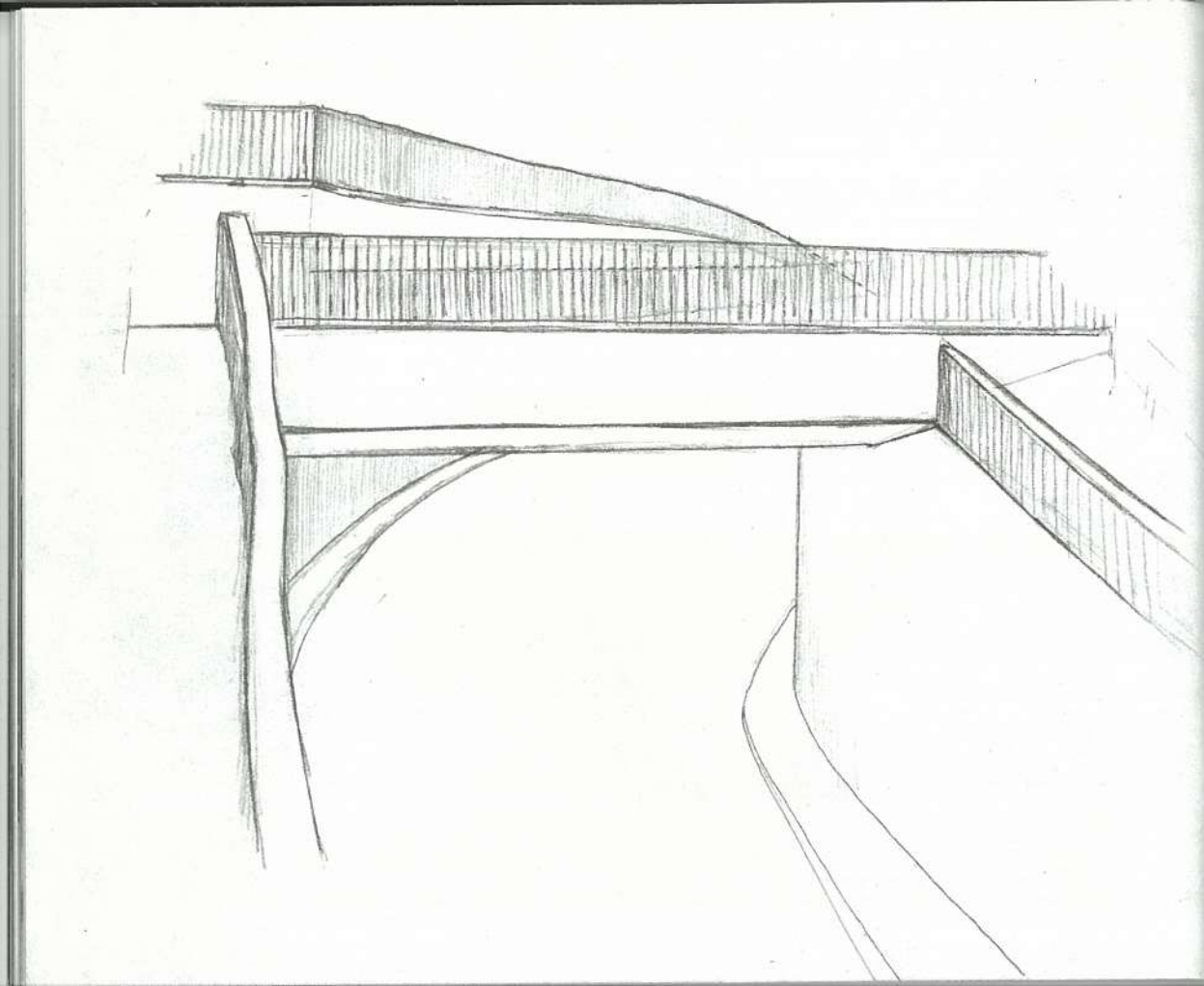












- 3 | 4 Sem título [2004]
4 | 5 Ponte Grande [1865]
6 Ponte Cruzeiro do Sul [2005]
7 Ponte Cruzeiro do Sul [1961]
8 Ponte Pequena [s.d.]
9 Sebastião Assis Ferreira | Ponte dos Remédios [1952]
10 Ponte Eng. Roberto R. Zuucolo [2005]
11 Ponte Eusébio Matoso [2005]
12 Ponte do Morumbi [2005]
13 Ponte do Morumbi [1976]
14 Passarela Cidade Universitária [2005]
15 Ponte do Socorro [2005]
17 | 18 Benedito Junqueira Duarte | Túnel Trianon [1939]
19 Túnel Trianon [2005]
20 Viaduto do Chá [2005]
21 Benedito Junqueira Duarte | Viaduto do Chá [1938]
22 Benedito Junqueira Duarte | Parque do Anhangabaú [1938]
23 Álvaro Esteves | Viaduto Santa Ifigênia [1972]
24 Viaduto Santa Ifigênia [2005]
25 Aurélio Becherini | Vale do Anhangabaú [c.1920]
26 | 27 Ivo Justino | Elevado Arthur da Costa e Silva [1970]
28 Elevado Arthur da Costa e Silva [2005]
29 Viaduto Pacaembú [2005]
30 Avenida Dr. Arnaldo | Rua Heitor Penteado [2005]
31 Ivo Justino | Avenida Dr. Arnaldo | Rua Heitor Penteado [1970]

Farsites | urban crisis and domestic symptoms in recent contemporary art : inSite05 :
Sitios Distantes | crisis urbanas y síntomas domésticos en el arte contemporáneo reciente

puentes, túneles y viaductos : são paulo : bridges, tunnels and viaducts