



ERRATIC FIELDS

IN
SITE

ART PRACTICES IN THE PUBLIC SPHERE

Erratic Fields

Erratic Fields is an exhibition emerging from microhistories and territories of shifting political and social ecologies of the “Californias.” As part of the ongoing INSITE curatorial project *The Sedimentary Effect*, “Erratic Fields” is its second chapter, and the eponymous exhibition concludes five years of research, expeditions, conversations, and nature walks with artists, curators, scientists, and naturalists that evolved into context-based, long-term commissions with artists living in the area.

The project began as an exploration of how natural phenomena and sediments travel, migrate, and erode transborder landscapes while simultaneously informing life on the surface. Drawing on biographical, historical, and political narratives affected by the erratic condition of places across Baja California and Southern California, the works in this exhibition move beyond traditional presentations of nature. Instead, they foreground the psychological, societal, and political realms through which geology and ecology actively shape cultural imagination.

Throughout the exhibition, the border between Mexico and the United States is seen as a single, interconnected region where utopian and dystopian archetypes of nature coexist and collide. Driven by earthquakes, geysers, droughts, wildfires, cloud formations, deadly winds, bird migration, geologic anomalies, and dust, the works reveal how environmental forces are connected with economic, social, and political processes. Inspired by the butterfly effect—where the flap of a butterfly’s wings in one place can trigger a distant tornado—the exhibition examines how small events resonate across larger scales, shaping memory, myth, and idealized and unsettling relationships to place.

Andrea Torreblanca

Curator

INSITE Commonplaces

***The Sedimentary Effect* – Chapter Two**



Artist
Commissions
Archivo Familiar
del Río Colorado
Alex Bazán
Johnnie Chatman
Lael Corbin
Leslie García
Periférica Educativa
Experimental
(Invited Education
Project)

Artists from
previous
INSITE editions
Mark Dion
Anya Gallaccio
Allan McCollum
Allan Sekula
Gary Simmons
Yukinori Yanagi

Anya Gallaccio
Beautiful Minds, 2015-2026
(process)



Train	Number	Time	Destination	Notes
184	184	10:00	San Diego	
185	185	10:15	San Diego	
186	186	10:30	San Diego	
187	187	10:45	San Diego	
188	188	11:00	San Diego	
189	189	11:15	San Diego	
190	190	11:30	San Diego	
191	191	11:45	San Diego	
192	192	12:00	San Diego	
193	193	12:15	San Diego	
194	194	12:30	San Diego	
195	195	12:45	San Diego	
196	196	13:00	San Diego	
197	197	13:15	San Diego	
198	198	13:30	San Diego	
199	199	13:45	San Diego	
200	200	14:00	San Diego	

Installation View
Erratic Fields at Bread & Salt, San Diego



Mark Dion
Blind/Hide, 2026 (interior)
Exterior pictured on cover



Mark Dion
Blind/Hide drawings, 2000/2025

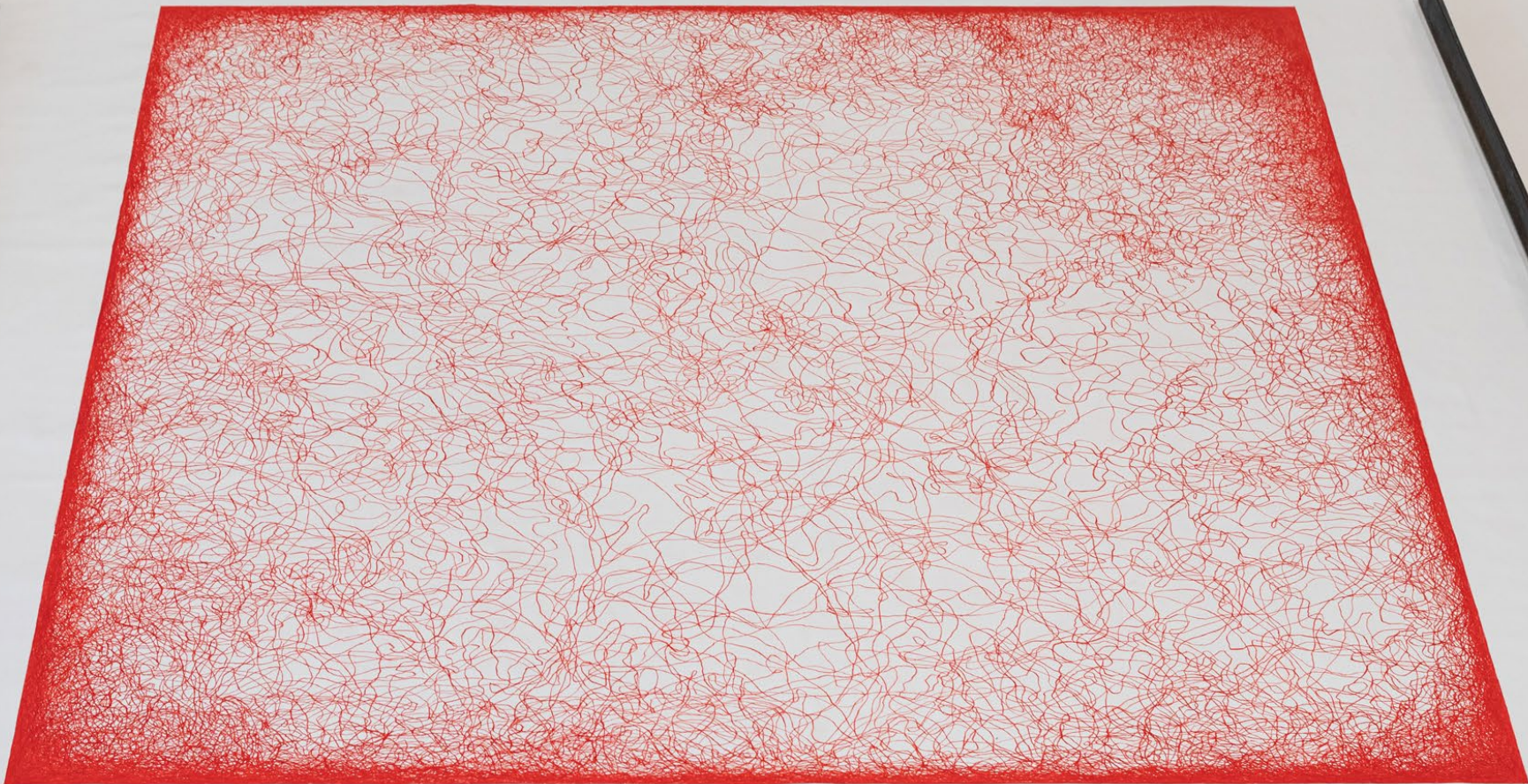


Lael Corbin
Wrestling the Santa Ana Winds, 2022-2026
following page: stills from *Santa Ana, 2026*






Yukinori Yanagi
Wandering Position, 1994/2026





Allan Sekula
Dead Letter Office, 1997

Allan McCollum
Signs of Mount Signal, 2000



Gary Simmons
Desert Blizzard, 1997
4K remaster from the original 16 mm film, 2025



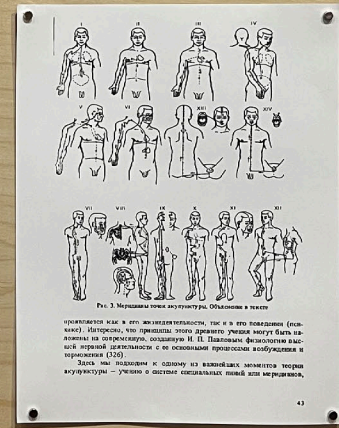
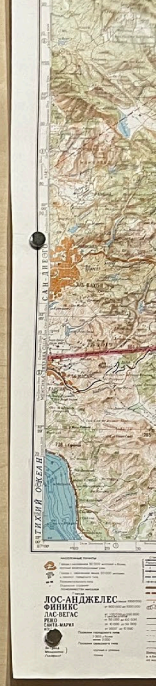
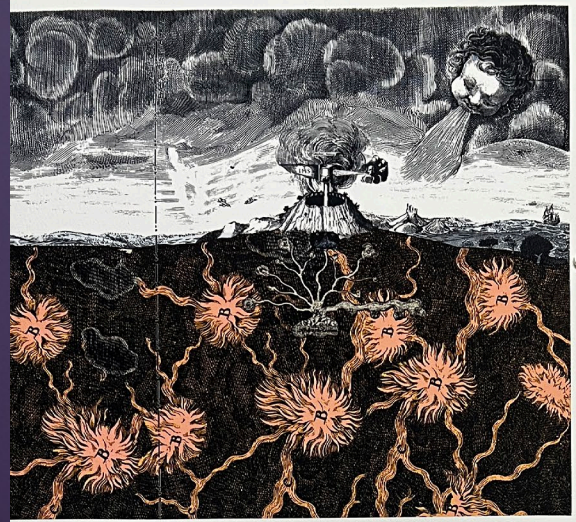
Alex Bazán
Elemental Memory, 2021-2026

Alex Bazán
Elemental Memory, 2021-2026

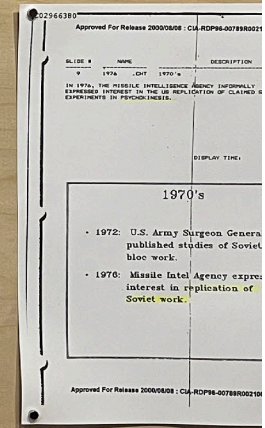




MUSEUM OF
GEOLOGICAL FORCES



The scientific war for understanding geological forces. CIA: Project Sun Streak. Report identifying the potential of new oil-rich basins formed during the Cold War. 1962. Intelligence Division created by Phillips, J. H., and O'Brien, A. J. 1960. Understanding and Contemporary Nature America, and a historical map of the area region, 1994





Johnnie Chatman
*What the Water Told Me and the Birds
Whispered, 2021-2026*



Leslie García
S.A.R — Seismic / Atmospheric Radio,
2025–2026



ERRATIC FIELDS

INSITE Commonplaces The Sedimentary Effect – Chapter Two

Artists
 Alex Basin, Johnnie Chatman, Laci Corbin, Archivo Familiar del Bosque, Colorado (Rosela del Bosque, Minoru Kiyota, Mayte Miranda, Jessop Tavilla), Mark Dion, Anya Gallaccio, Leslie Garcia, Allan McCollum, Portia Landreth, Educativa Experimental (César Hoyola and Teresa Tavera) Invited Education Project, Allan Sekula, Gary Simmons, Yukinori Yanagi

Erratic Fields is an exhibition emerging from microhistories and territories of shifting political and social ecologies of the “California” as part of the ongoing INSITE curatorial project *The Sedimentary Effect*. “Erratic Fields” is its second chapter, and the eponymous exhibition concludes five years of research, expeditions, conversations, and nature walks with artists, curators, scientists, and naturalists that evolved into context-based, long-term commissions with artists living in the area. The project began as an exploration of how natural phenomena and sediments travel, migrate, and erode transborder landscapes while simultaneously informing life on the surface. Drawing on biographical, historical, and political narratives affected by the erratic condition of places across Baja California and Southern California, the works in this exhibition move beyond traditional presentations of nature. Instead, they foreground the psychological, societal, and political realms through which geology and ecology actively shape cultural imagination.

Throughout the exhibition, the border between Mexico and the United States is seen as a single, interconnected region where utopian and dystopian archetypes of nature coexist and collide. Driven by earthquakes, geyzers, droughts, wildfires, cloud formations, deadly winds, bird migration, geologic anomalies, and dust, the works reveal how environmental forces are connected with economic, social, and political processes. Inspired by the butterfly effect—where the flap of a butterfly’s wings in one place can trigger a distant tornado—the exhibition examines how small events resonate across larger scales, shaping memory, myth, and idealized and unsettling relationships to place.



exhibition supporters and collaborators



Major support for INSITE’s operations is provided by the Mellon Foundation